

 **3DMAKERPRO**

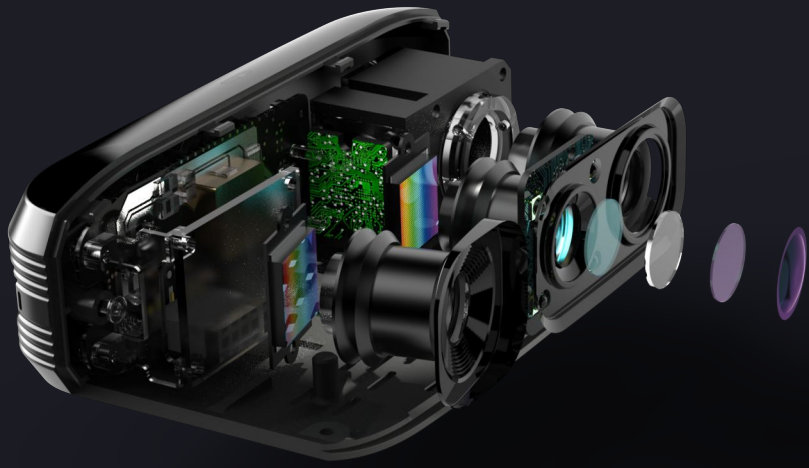


**reddot** winner 2024  
industrial design



# Moose

Easy Entry to Expert 3D



# 24-Bit color camera

Equipped with a 24-bit color camera supports 100% true color restoration.



reddot winner 2024  
industrial design



## Moose

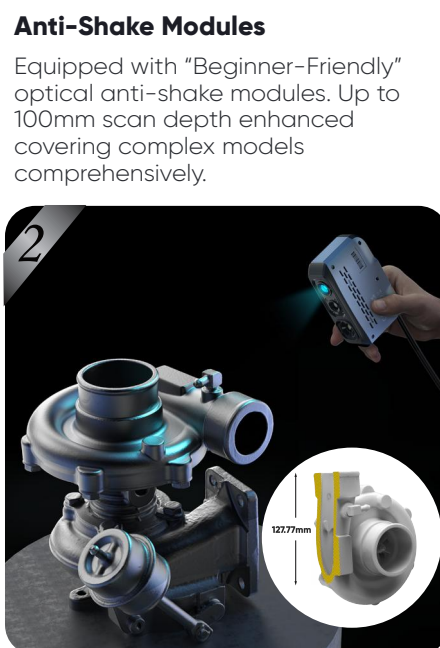


## Moose <sup>Lite</sup>



### 1 True-to-life Accuracy

With blue light and single-frame coding structure light technology, it can achieve 0.03mm accuracy.



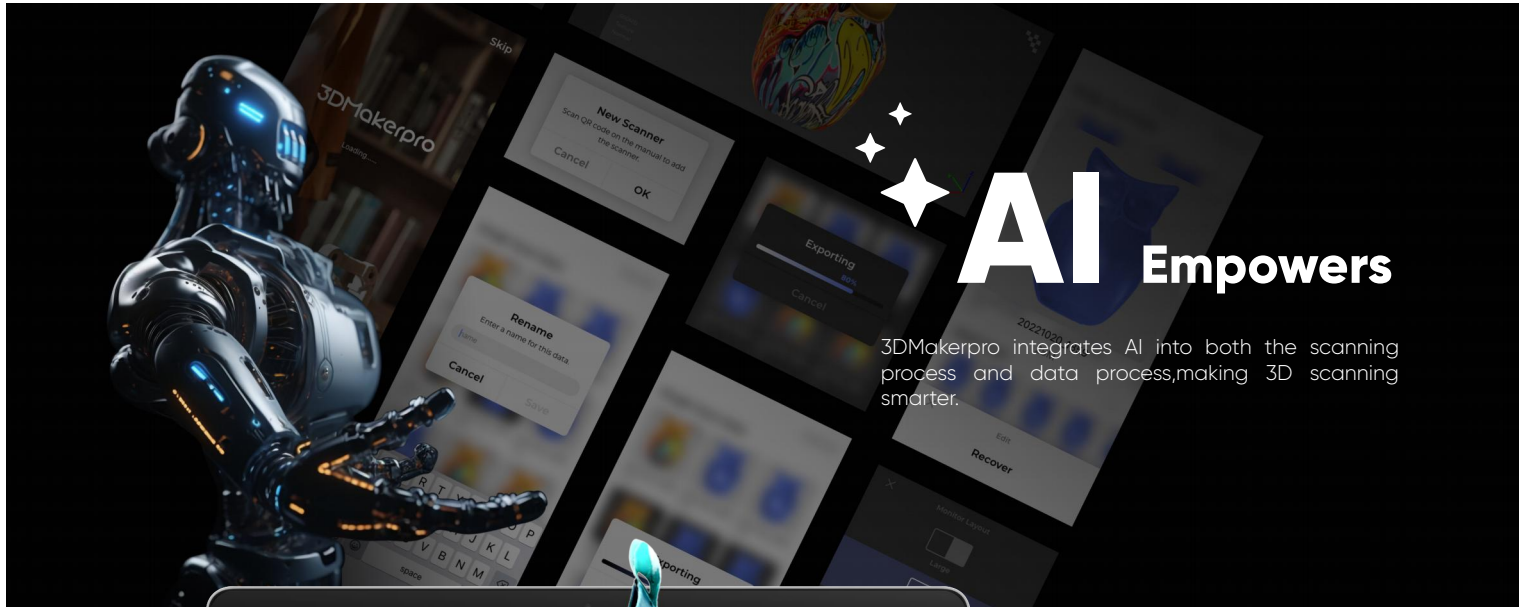
### 2 Anti-Shake Modules

Equipped with "Beginner-Friendly" optical anti-shake modules. Up to 100mm scan depth enhanced covering complex models comprehensively.



### 3 Marker Free Technology

No marker needed for your scanner.



3DMakerpro integrates AI into both the scanning process and data process, making 3D scanning smarter.

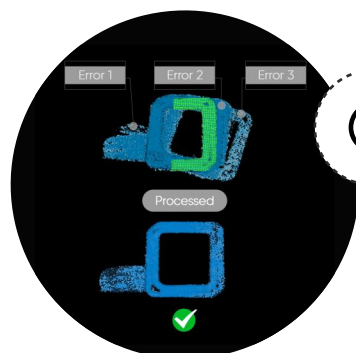
Maximum scan object size:  
**1500mm**



**AI**

**AI Visual Tracking**

AI algorithm achieves smooth, marker-free scanning.



**Smart Error Correction**

**Smart Error Correction**

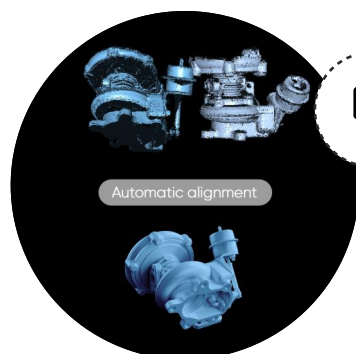
AI eliminates flawed or misaligned point cloud data while retaining accurate points.



**0.07 mm**

**With 0.07mm resolution**

Detailed point clouds perfectly preserve object details.



**Auto Align**

**Auto Align**

JMStudio can automatically stitch in most scenarios ensuring seamless connections.



## 3DMAKERPRO

### Scan Performance Parameters:

### Moose

<b>Accuracy:</b>	0.03mm	<b>Resolution:</b>	0.07mm
<b>Frame rate:</b>	10fps	<b>Tracking Mode:</b>	AI Visual tracking
<b>Work Distance:</b>	150-400mm	<b>Single Capture Range:</b>	200x100mm
<b>Typical object sizes:</b>	15-1500mm	<b>USB interface:</b>	USB2.0
<b>Light source:</b>	Blue LED	<b>Color texture:</b>	24-bit color textures
<b>Dimensions:</b>	120x60x35mm	<b>Weight:</b>	280g

### Moose Lite

<b>Accuracy:</b>	0.05mm	<b>Resolution:</b>	0.1mm
<b>Frame rate:</b>	10fps	<b>Tracking Mode:</b>	AI Visual tracking
<b>Work Distance:</b>	150-400mm	<b>Single Capture Range:</b>	200x100mm
<b>Typical object sizes:</b>	15-1500mm	<b>USB interface:</b>	USB2.0
<b>Light source:</b>	NIR	<b>Color texture:</b>	Mono color textures
<b>Dimensions:</b>	120x60x35mm	<b>Weight:</b>	250g

### Software System Requirements:

Output format:OBJ/STL/PLY/ASC

Compatible system: Windows10/11 64bit, MacOS12/13/14

Compatible Mobile: Android 10.0 or later, iOS 15.0 or later (Extended support)

Minimum computer requirements: Intel Core i5 8th, 16GB RAM, MX250 GPU with 2GB VRAM

Recommended computer requirements: Intel Core i7 8th, 16GB RAM, NVIDIA1060 GPU with 4GB VRAM

#### 3DMAKERPRO

**f** @3DMakerProCares  
**@** @official3DMakerpro  
**y** @3DMakerpro  
**e** <https://store.3dmakerpro.com/>  
**e** service@3dmakerpro.com

#### JimuMeta

**t** @JimuMeta  
**f** @JimuMeta  
**e** <https://www.jimumeta.com/>  
**☎** +1 (657) 999-5524  
**e** service@jimumeta.com

