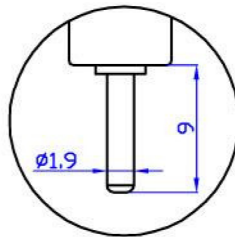
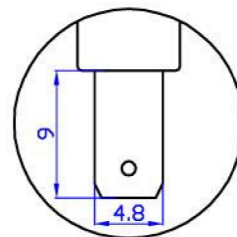


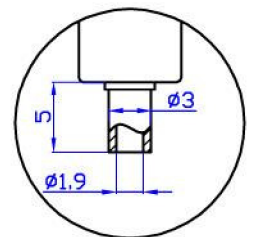
24.131.*



24.132.*



24.133.*



24.134.*

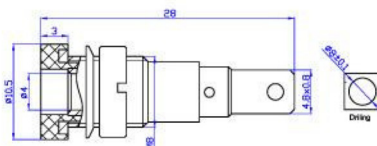
| Model. | Material | Rated voltage/current |
|----------|-------------------|-----------------------|
| 24.131.* | Insulator:PA | CATIII 600V/Max.10A |
| 24.132.* | Body:Brass | |
| 24.133.* | Surface:Nickel or | |
| 24.134.* | Gold plated | |



24.241.*



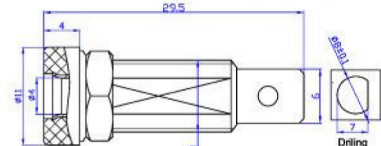
Material
 Insulator:PA
 Body:Brass
 Surface:Nickel plated
Rated voltage/current
 30Vac-60Vdc/Max.24A



24.244.*



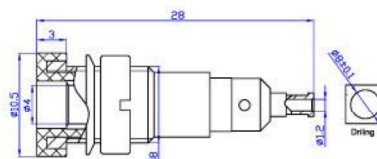
Material
 Insulator:ABS
 Body:Brass
 Surface:Zinc plated
Rated voltage/current
 30Vac-60Vdc/Max.24A



24.242.*



Material
 Insulator:PA
 Body:Brass
 Surface:Nickel plated
Rated voltage/current
 30Vac-60Vdc/Max.24A



24.243.*



Material
 Insulator:PA
 Body:Brass
 Surface:Silver plated
Rated voltage/current
 30Vac-60Vdc/Max.24A

