

Product Specification

Single Color Wi-Fi Controller Card HD-W2

V7.1.0

I. Overview

W2 is a low-cost, cost-effective monochrome Wi-Fi control card, which can display text, clock, counting, timing and many other contents, and is suitable for door display, signboard display and other occasions. It can be debugged with PC software HD2020 and Screen Control APP.

II. Connection schematic

After the Wi-Fi control card is powered on, mobile phones and laptops can connect to the control card's Wi-Fi hotspot for debugging or updating programs.



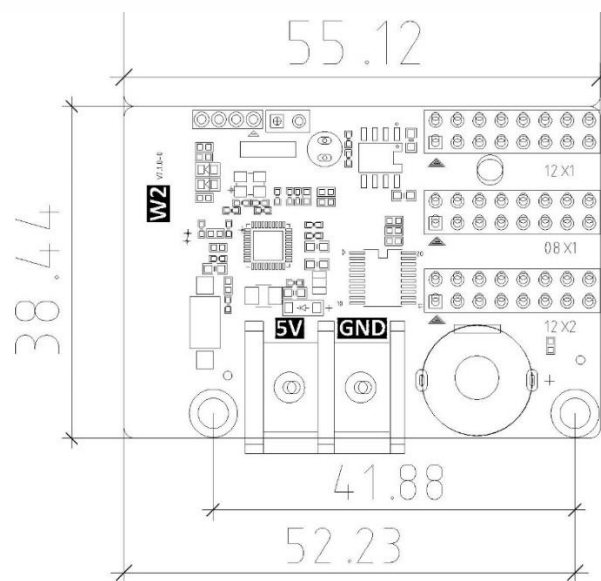
III. Product characteristics

1. support for program borders, regional borders, support for custom borders;
2. support a variety of text effects, font hollow, stroke and other designs;
3. support up to 20 content areas, free layout;
4. support power-on gradual light function;
5. support DC 2.2V~DC 7V ultra-wide voltage power supply. 6. new generation data backup programme;
6. the new generation of data backup programme to prevent data loss;
7. adopts special RTC chip to effectively control the time accuracy.

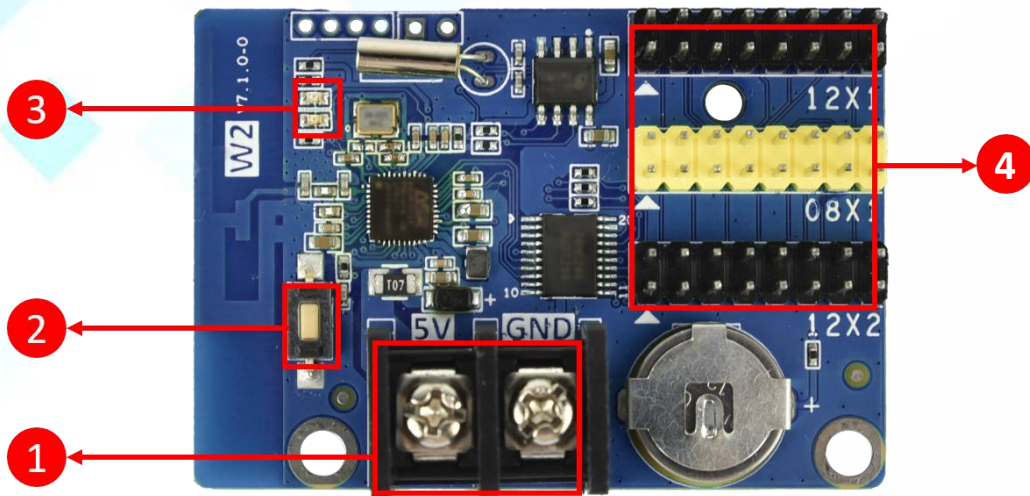
IV. List of functions

Control range	Monochrome: 512*32, 1024*16
FLASH Capacity	1M Byte
Communication mode	Wi-Fi
Number of program	1000
Number of zones	20, independent partition, independent effects, independent border
Display content	Text, Time, Timing, Counting, Lunar Calendar
Display mode	Sequential display
Clock function	<ol style="list-style-type: none"> 1、 Support perpetual calendar, analogue clock, lunar calendar 2、 Display font, font size, colour and position can be set arbitrarily. 3、 Support multi-time zone display
Automatic screen on/off	Support timer screen on/off
Brightness adjustment	Supports three brightness adjustment modes: manual adjustment, automatic adjustment, and adjustment by time period.
Operating power	3 watt

V. Product Size



VI. Interface description



- ① Power supply holder: connect to 5V DC power supply;
- ② Test button: test the display module;
- ③ Indicator light: normal power on power indicator light constant, Wi-Fi normal working indicator light flashing;
- ④ HUB interface: yellow for HUB08 interface, black for HUB12 interface, connect the LED display module through the cable.

VII. HUB12/HUB08 Interface Definition

HUB12/HUB08

1	OE	A	2
3	GND	B	4
5	GND	C	6
7	GND	CLK	8
9	GND	LA	10
11	GND	R	12
13	GND	G	14
15	GND	D	16

HUB12

1	GND	A	2
3	GND	B	4
5	GND	C	6
7	OE	D	8
9	R1	G1	10
11	R2	G2	12
13	GND	STR	14
15	GND	CLK	16

HUB08

VIII. Technical parameters

	minimum value	typical value	maximum values
Rated voltage (V)	4.2	5.0	5.5
Storage temperature (°C)	-40	25	105
Operating ambient temperature (°C)	-40	25	80
Working environment humidity (%)	0.0	30	95
Product net weight (kg)			
Product certification	CE、FCC、RoHS		

Precautionary note

- To ensure time storage of the control card in normal operation, please make sure that the battery on the control card is normal and not loose;
- To ensure stable long-term operation of the system, please try to use standard DC supply voltage for power supply.