

765 XS BALL VALVE

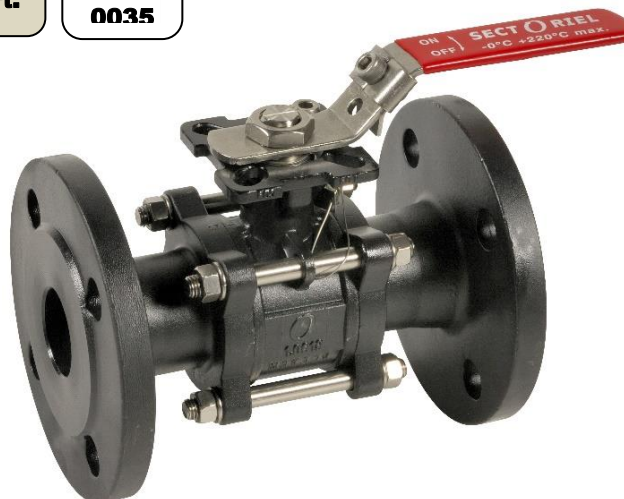
FEATURES

765 XS 2-way ball valve is designed for the shut-off of networks of high-temperature fluids, such as saturated steam up to 15 bar. This 3-piece external tie-bolt ball valve is easy to remove for servicing. This full-bore valve has an anti-static device and double sealing at the cable gland. It is EC-, ATEX- fire safety- and TA-LUFT-approved. The ISO 5211 flange allows an easy mounting of an actuator.



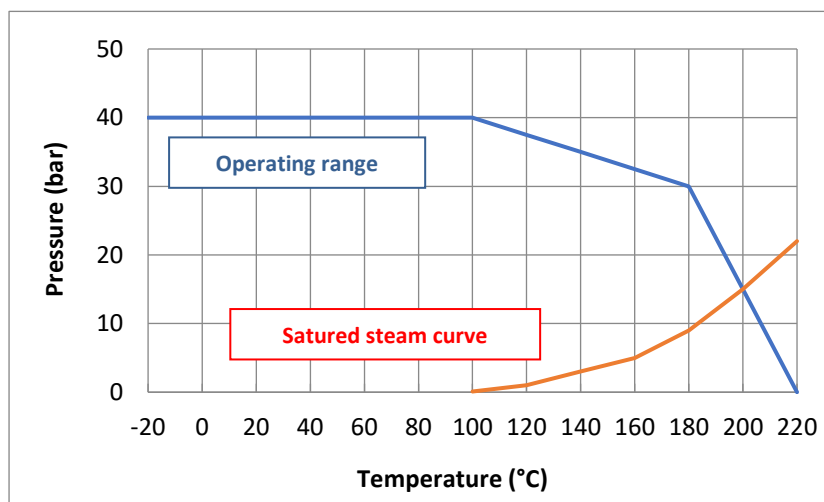
AVAILABLE MODELS

Diameters DN 15 to DN 100.
PN 40 RF flange connection.



LIMITS OF USE

Fluid pressure : PS	40 bar (20°C)
Fluid temperature : WT°	-25°C / +220°C
Use on steam	15 bar / +200°C



DIRECTIVES AND MANUFACTURING STANDARDS

OBJET	Standard	ON	OBJET	Standard
Pressure Equipment Directive 2014/68/EC	DN 15 to DN 25 : not subject		Final test	EN 12266
	DN 32 to DN 100 : category III	TÜV 0035	Material certificate	EN 10204
Size	EN 12516-1		Motorisation connection	ISO 5211
Steel grade	EN 1503-1		Fire safe	API 607/5 – ISO 10497-5
ATEX Directive	II 2G/D Tx zones 1,2,21 and 22	SIRA 0518	EN 13463-1 and 5	

Information given as an indication only, and subject to possible modifications



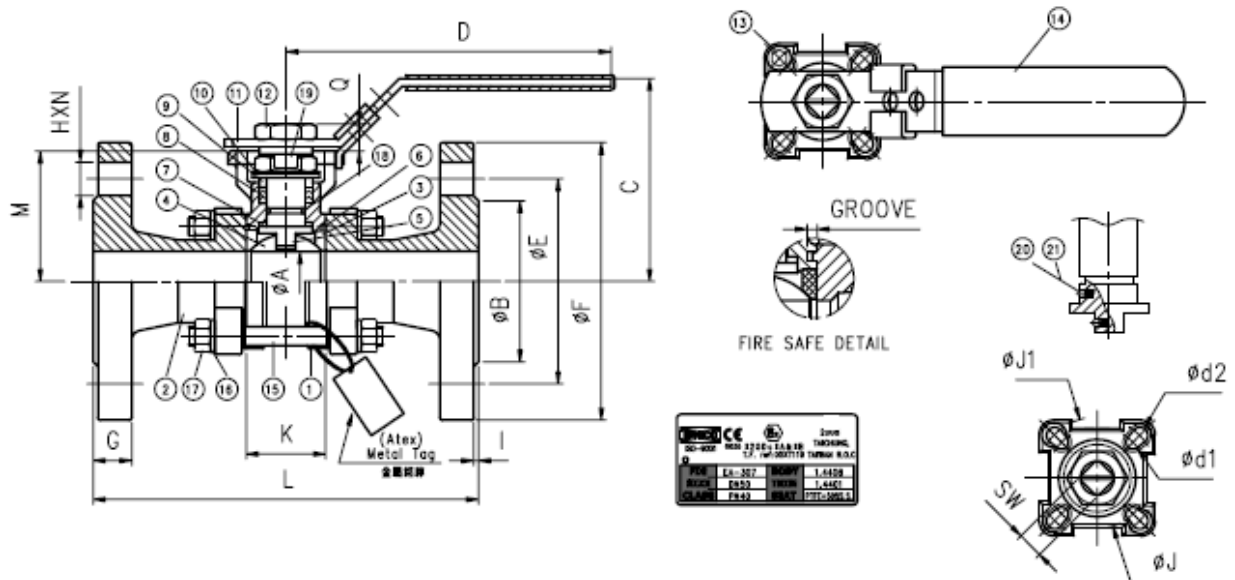
SECTORIEL S.A.
45 rue du Ruisseau
38290 SAINT QUENTIN-FALLAVIER – FRA NCE
Tél : +33 4 74 94 90 70 - Fax : +33 4 74 94 13 95
www.sectoriel.com / Email : sectoriel@sectoriel.fr

Pages	2/2
Ref.	TDS2713 ENG
Rev.	01
Date	12/2023

765 XS BALL VALVE

CONSTRUCTION

No.	Name	Material	No.	Name	Material
1	Body	1.0619	12	Nut	304 SS
2	Ends	1.0619	13	Stop	304 SS
3*	Seats	PTFE+50% SS	14	Coupling	PVC
4	Ball	CF8M / 316	15	Tie-bolts	304 SS
5	Stem	316 SS	16	Washer	304 SS
6*	Body gasket	Graphite	17	Nuts	304 SS
7*	Washer	PTFE+15%GF	18*	O-ring	FPM
8*	Gasket	Graphite	19	Tab washer	304 SS
9	Spacer	301 SS	20	Anti-static	316 SS
10	B. washer	301 SS	21	Spring	304 SS
11	Lever	304 SS			



DIMENSIONS (mm)

DN	A	B	C	D	E	F	SW	d1	d2	M	Q	K	L
15	16	45	70.9	125	65	95	9	6	6	42.3	8	25.2	130
20	20	58	73.4	125	75	105	9	6	6	44.8	8	27.2	150
25	24.5	68	84.1	150	85	115	11	6	7	54	12	33	160
32	32	78	89.3	150	100	140	11	6	7	59.2	12	41.2	180
40	38	88	109.5	165	110	150	14	7	9	73.5	14.8	49.3	200
50	50	102	118.9	165	125	165	14	7	9	82.9	14.8	63.6	230
65	65	122	155	300	145	185	17	9	11	107	17.1	82.1	290
80	80	138	165	335	160	200	17	9	11	117.3	17.1	95.8	310
100	100	162	180	335	190	235	17	9	11	132.3	17.1	117.8	350

Information given as an indication only, and subject to possible modifications



SECTORIEL S.A.
 45 rue du Ruisseau
 38290 SAINT QUENTIN-FALLAVIER – FRA NCE
 Tél : +33 4 74 94 90 70 - Fax : +33 4 74 94 13 95
www.sectoriel.com / Email : sectoriel@sectoriel.fr

Pages	2/2
Ref.	TDS2713 ENG
Rev.	01
Date	12/2023