

MAXIMUS-3

— ★ ★ ★ —

JL WINCH MOUNT PLATE – FOR RUBICON STEEL BUMPER

INSTALLATION GUIDE

Please make sure you read and understand the entire installation guide before you start. We expect you to have basic mechanical aptitude to perform this installation, otherwise hire a professional installer. If you have questions, please call 248-821-6654 for help.

We insist that you separate and identify all the parts and hardware before you proceed with the installation process and disassembly of your Jeep.

PARTS LIST

JL WINCH PLATE.....	1
JL FAIRLEAD PLATE (optional Hook Anchor).....	1
SPACER PLATES.....	2

TOOLS REQUIRED

- Metric Drive Sockets (13mm, 15mm, 16mm)
- Metric Drive Deep Sockets (18mm, 19mm)
- Torx Bit #45
- Flathead Screwdriver
- Allen Key #5

HARDWARE

(WINCH PLATE HARDWARE KIT)

M12 Hex Head Bolts (zinc)	2
M12 Washer (zinc)	2
M12 Flange Nuts (zinc)	2
M12 Mechanical Lock Nuts (zinc)	2
M8 Button Head Bolt (black, stainless)	2
M8 Flange Nuts (zinc)	5
M12 Hex Head Bolts – Short (zinc)	2
M12 Flange Nuts	2

(FAIRLEAD PLATE HARDWARE KIT)

M8 Button Head Bolt (black, stainless steel) ...	4
M8 Flange Nuts (zinc)	4



REMOVE THE BUMPER

(1)- REMOVE THE SKID PLATE:

Using a 13mm socket and ratchet remove the skid plate – there are 7 bolts to remove

(2)- REMOVE THE PLASTIC FILLER TRIM BETWEEN THE BUMPER AND THE GRILLE:

Using a flat-head screwdriver pry out the center locking pin from the plastic retainer clips. Then pull the plastic filler trim piece away from the frame.



(3)- REMOVE THE WINCH COVER PLATE:

Using T-45 torx bit remove the top plate – there are 5 torx bolts.

(4) DISCONNECT THE FOG LIGHT WIRE HARNESS

On the passenger side of the frame behind the bumper. Push the plastic release clip and slide the harness apart

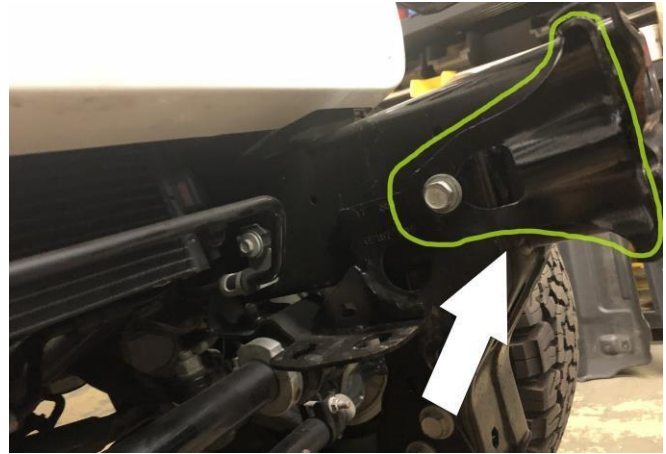


(5)- REMOVE THE FRONT BUMPER:

Using the 18 MM deep socket, short extension, and ratchet remove the 8 bumper flanged nuts – there are 4 bolts on each side.

(6) REMOVE THE TWO INNER REINFORCEMENT TIE BRACKETS – Using a 16mm socket and ratchet.

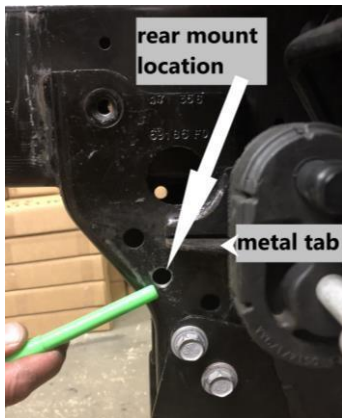
(7) REMOVE THE SKID PLATE BRACKETS x2 – from both sides of chassis frame. Save these, they will be reinstalled later.



INSTALL THE WINCH PLATE

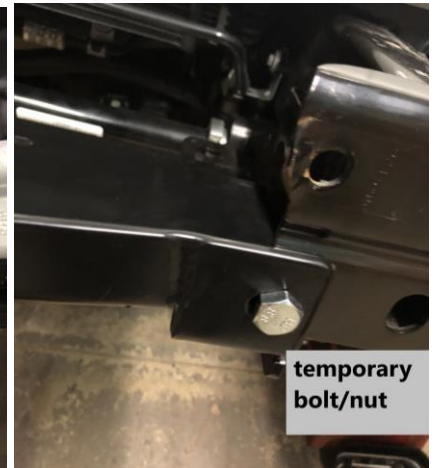
(8) SLIDE WINCH PLATE INTO POSITION, BETWEEN CHASSIS RAILS:

Slide the back of the plate in first, underneath the metal tab that protrudes from the subframe. The front of the winch plate will sit on the outside of the bumper mounting flange (see pictures below)



(9) INSERT THE REAR FASTENERS FOR THE WINCH PLATE:

Insert the provided M12 bolt & M12 washer through the winch plate and the hole in chassis frame. Feed the M12 flange nut through the access hole in the chassis sub-frame and **HAND TIGHTEN** for now



(10) INSERT TEMPORARY BOLTS/NUTS:

Use the supplied *short* M12 bolts & flange nuts to temporarily align/clamp the front tab of the winch plate to the chassis flange.

(11) TIGHTEN REAR WINCH PLATE BOLTS:

Using a 19mm socket on the M12 bolt. The flange nut is serrated and should tighten without a wrench (18mm if necessary)

(12) MOUNT WINCH TO THE WINCH PLATE: INSERT winch BOLTS and TORQUE to manufacture's specifications



(13) REMOVE TEMPORARY BOLTS

(14) REINSTALL SKID PLATE BRACKETS

PREPARE BUMPER

(15) REMOVE PLASTIC FAIRLEAD TRIM PIECE: Press retainer clips, pop out of bumper

(16) BOLT FAIRLEAD PLATE (OR WINCH HOOK ANCHOR) TO THE BUMPER:

With the supplied hardware (four M8 bolts & four M8 flange nuts) Use #5 Allen Key. Line-up the fairlead holes on the plate and bumper

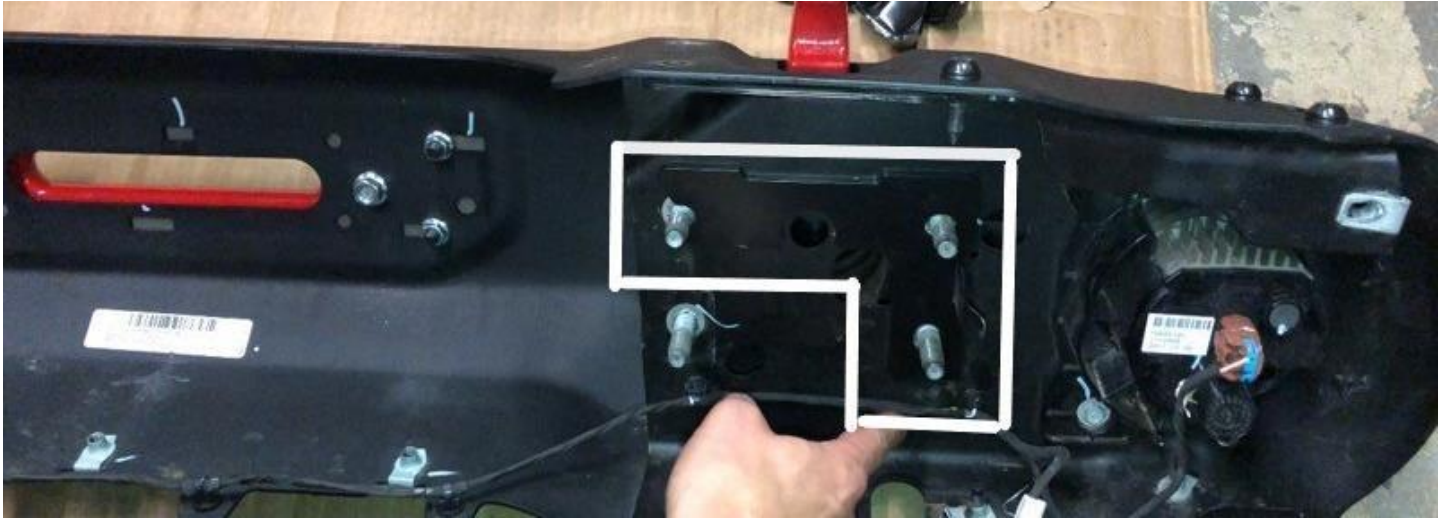
(17) BOLT FAIRLEAD TO FAIRLEAD PLATE (OR WINCH HOOK ANCHOR) & BUMPER:

This hardware is supplied by the manufacturer of your fairlead or winch.



(18) INSERT SPACER PLATES TO BUMPER STUD BOLTS:

Plates will snap in place. The two holes in the spacer plates will go on the OUTER bumper bolts and the half-moon side goes on TOP. Repeat on both sides of the bumper



INSTALL BUMPER

(19) WIRE WINCH TO BATTERY: We chose to route wires over the sway bar. See your winch's install guide for more information.

(20) REINSTALL SKID PLATE: use seven factory bolts and 13mm socket

(21) REINSTALL FACTORY TORX BOLTS TO THE BUMPER'S WINCH CUT-OUT: use T-45 torx bit and provided M8 flange nuts.

WARNING



Limited Warranty



All Maximus-3 aftermarket products and components must be installed as the manufacturer instructs. Maximus-3, LLC will not be responsible for any modification, improper installation, alteration, tampering, neglect, abuse or misuse of our products. Only use Maximus-3 installation guide to add, alter, or fabricate factory parts to incorporate Maximus-3 products. We will be happy to answer any questions concerning the design, function, and correct use of our products by calling 248-821-6654. It is ultimately the user's responsibility to have all fasteners properly retorqued after the first 100 miles and then every 3,000 miles thereafter. Tire carrier must be inspected for looseness every 1,000 miles. Using your vehicle off-road will put extreme stress on the vehicle and components. After driving off-road, always check for damage and wear to components, accessories, and equipment. Completely inspect your vehicle including wheels, tires, tire carrier, roof rack, and front set up. Check all threaded fasteners for looseness. Re-torque if necessary to the required specifications. Check and remove any accumulated dirt, mud rock, or debris to preserve powder coat finish/rust prevention.

We offer Limited Warranty on products engineered and manufactured by *MAXIMUS-3*.

Our **Warranty** covers all workmanship, material and paint/finish defects for a period of 1 year (12 months) from the time of initial purchase. *MAXIMUS-3* provides detailed installation instructions for every product. It is the responsibility of the purchaser / installer to ensure these instructions are followed properly. *MAXIMUS-3* will not be responsible for damages caused by misuse, altered or improperly installed products. *MAXIMUS-3* will not cover paint or labor costs for damaged items. Warranty is not transferable and covers all items ordered on or after December 1, 2012 with a valid original receipt.

Warranty covers all components manufactured by *MAXIMUS-3* unless otherwise specified on individual product listings.

3 Year Manufacturer Warranty

Maximus-3 products are warranted to be free from structural defects. All metallic components will carry 3 year manufacturer structural warranty. All warranty claims shall be issued in replacement of the original part or in-store credit. No refunds will be issued in cash, check or credit card payments.

For Procedures for Returning or Exchanging Product please visit our website or call 248-821-6654.

PRODUCT MUST BE RETURNED TO THE ORIGINAL PLACE OF PURCHASE – Please refer to your original invoice.