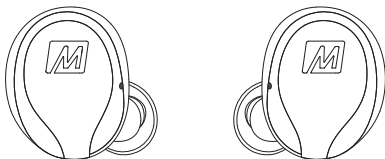


USER MANUAL



X10

**TRULY WIRELESS
SPORTS EARPHONES**

www.MEEaudio.com/X10

Model: X10

X10 SETUP GUIDE



Scan QR code or visit:
MEEaudio.com/X10Support

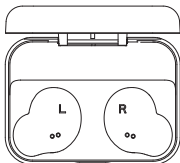
MEE audio®
MUSIC ENJOYMENT FOR EVERYONE

GETTING STARTED

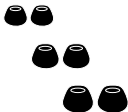
Package Contents



X10 Truly Wireless
Sports Earphones



Charging
Case



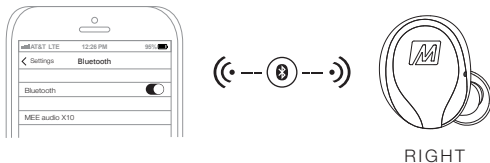
Eartips
(3 Pairs)



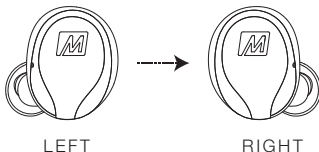
USB-C Charging
Cable

UNDERSTANDING THE X10

The **right earpiece** connects to your Bluetooth device. It can also be used independently as a mono headset.

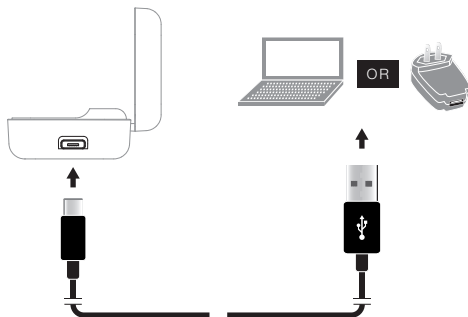


The **left earpiece** automatically connects to the **right earpiece**. It cannot be used independently.

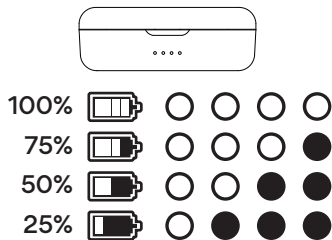


STEP 1: CHARGING

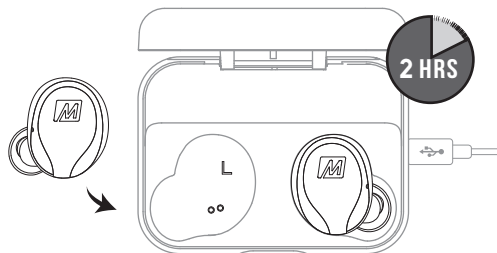
Connect charging case to a USB charger.



Charging Case Battery Indicator Lights



Place **both** earpieces in case to charge.



⚠ Controls are disabled when earpieces are inside charging case.

Earpiece Indicator Lights



Charging:
Solid white lights



Charged:
Lights off

STEP 3: FITTING

Select the eartips with the best sound and comfort for your ears.



Identify the **left** and **right** earpieces.

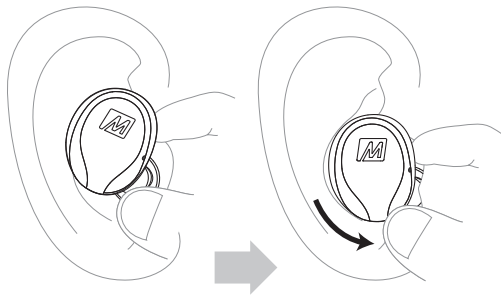


LEFT



RIGHT

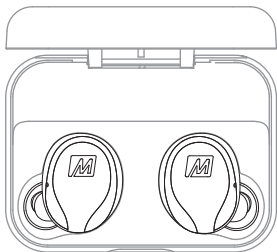
Put each earpiece in the corresponding ear.



Adjust each earpiece until it fits flush in your ear and the eartip seals the ear canal. If your music sounds tinny or lacks bass, try different eartips.

STEP 4: POWERING OFF

When done listening, place **both earpieces** back in the case.



If earpieces are sweaty or damp, allow them to dry fully before storing them in the case.

SUBSEQUENT USE

When removed from the charging case, the X10 reconnects automatically to the last paired Bluetooth device that is in range.

To reconnect manually, open the Bluetooth menu on your device and select “MEE audio X10” from the Bluetooth device list.

You can also use just the **right earpiece** as a mono headset by leaving the **left earpiece** in the case.

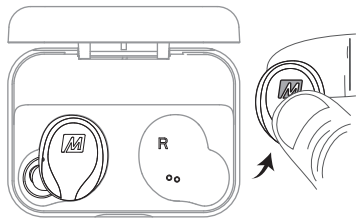
PAIRING NEW DEVICES

To manually enter pairing mode:

Remove **right earpiece** from case, press and hold the button for 5 seconds to power it off, then press and hold the button for 5 seconds again until the blue and white lights flash indicating pairing mode.



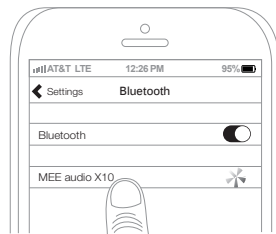
Select “MEE audio X10” in the Bluetooth menu of the new device you wish to pair to complete the pairing process.



Earpiece Indicator Lights



Pairing mode is indicated by flashing alternating blue and white lights

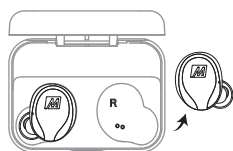


FUNCTIONALITY & CONTROLS

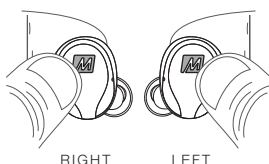


Controls are disabled when earpieces are inside charging case.

Power On



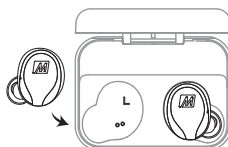
OR



remove
from case

HOLD **M** button on
each earpiece for 3 secs

Power Off



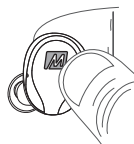
OR



place in
case

HOLD **M** button on
right earpiece for 5 secs

Play / Pause / Answer Call / End Call



OR



PRESS **M** button on either earpiece

Decrease Volume



LEFT

PRESS **M** button
2x on left earpiece

Increase Volume



RIGHT

PRESS **M** button
2x on right earpiece

Siri® / Google Assistant™ / Voice Control



LEFT

OR



RIGHT

HOLD **M** button for 2 secs on either earpiece

Previous Track



LEFT

PRESS **M** button
3x on left earpiece

Next Track



RIGHT

PRESS **M** button
3x on right earpiece

Reject Call



LEFT

OR



RIGHT

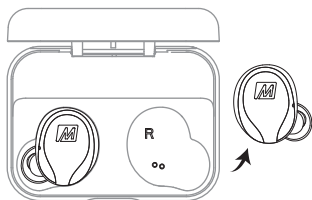
PRESS **M** button 2x on either earpiece

TROUBLESHOOTING

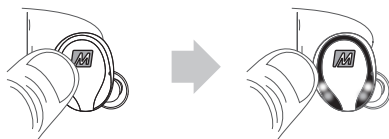
Factory Reset

A factory reset can be used to restore all features to their factory settings and delete all previous Bluetooth pairings from memory. Before the X10 can be used again, a new pairing will need to be created.

- 1) Place both earpieces in the case. Next, remove the **right earpiece** from case.



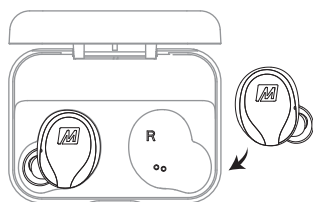
- 2) Press and hold the button for 5 seconds to power it off, then press and hold the button for 5 seconds again until the blue and white lights flash in an alternating manner, indicating pairing mode.



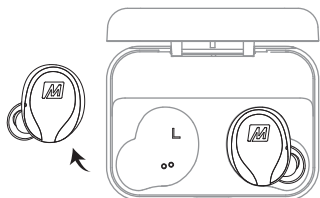
- 3) Once the **right earpiece** is in pairing mode, press the button 6 times rapidly to reset the earpiece. A white light will come on indicating that it was reset.



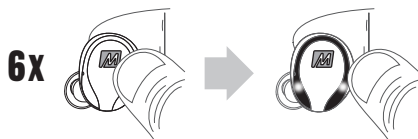
- 4) Put the **right earpiece** back in the case.



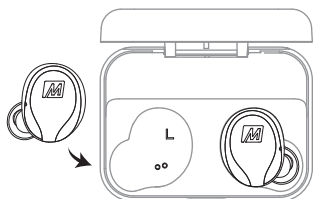
- 5) Take **left earpiece** out of the case.



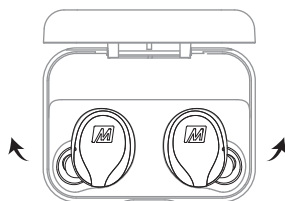
- 6) Press the button on the **left earpiece** 6 times rapidly to reset the earpiece. A white light will come on indicating that it was reset.



- 7) Put the **left earpiece** back in the case.



- 8) Take both earpieces out of the case and follow the instructions in the "PAIRING" section to create a new pairing with your device.



WARNINGS

Using headphones at high volumes for extended periods of time will result in permanent hearing damage. It is advised you keep volume levels moderate to low at all times for your safety. Turn the volume all the way down after connecting your earphones, then gradually increase the volume until you reach a comfortable listening level. Do not use headphones while driving a car, cycling, operating machinery, or performing other activities that require hearing surrounding sounds.

Keep the device and packaging out of reach of children.

This device is designed and manufactured to operate within its defined design limits. Misuse may result in electric shock or fire. Read and follow these instructions carefully.

- If submersed in water, do not turn the device on until completely dried.
Note: liquid submersion voids the warranty.
- To prevent fire or shock hazards, do not expose this unit to rain or moisture. If the device comes in contact with liquids, quickly wipe away. If submersed in water, do not turn the device on until completely dried. Note: liquid submersion voids the warranty.
- Danger of explosion or fire if batteries are damaged. Keep away from direct sunlight, naked flames, flammable gasses, or heat sources such as radiators or stoves
- Do not use around flammable gasses as fire or explosion may occur.
- There are no user replaceable/repairable parts in the device. Disassembling it will void your warranty.
- Only use attachments/accessories specified by the manufacturer

Changes or modifications to this unit not expressly approved by MEE audio could void the user's authority to operate the equipment.

COMPLIANCE INFORMATION

This device complies with part 15 of the FCC Rules. Operation is subject to the following two conditions: (1) This device may not cause harmful interference, and (2) this device must accept any interference received, including interference that may cause undesired operation.

FCC RULES

This equipment has been tested and found to comply with the limits for a Class B digital device, pursuant to part 15 of the FCC Rules. These limits are designed to provide reasonable protection against harmful interference in a residential installation. This equipment generates, uses and can radiate radio frequency energy and, if not installed and used in accordance with the instruction manual, may cause harmful interference to radio communications.

However, there is no guarantee that interference will not occur in a particular installation. If this equipment does cause harmful interference to radio or television reception, which can be determined by turning the equipment off and on, the user is encouraged to try to correct the interference by one or more of the following measures:

- Relocate the receiving antenna.
- Increase the separation between equipment and receiver.
- Connect the equipment into an outlet on a circuit different from that to which the receiver is connected.
- Consult the dealer or an experienced radio/TV technician for help.

DISPOSAL AND RECYCLING

Dispose of this product in accordance with all local laws and regulations. Because this product contains electronic components and a battery, it must be disposed of separately from household waste. Contact local authorities to learn about disposal and recycling options.

WARRANTY

MEE audio products purchased from authorized resellers are covered by a 1-year manufacturer warranty. For more information, contact your local MEE audio dealer or visit [MEEaudio.com/Support](https://www.MEEaudio.com/Support)

MEE audio and its logo are registered trademarks of S2E, Inc. All rights reserved.

The Bluetooth® word mark and logos are registered trademarks owned by Bluetooth SIG, Inc. and any use of such marks by MEE audio is under license. Other trademarks and trade names are those of their respective owners.

Siri® is a registered trademark of Apple Inc.

Google Assistant is a trademark of Google Inc.

FOR ADDITIONAL SUPPORT

VIEW OUR VIDEO SETUP GUIDE

Scan QR code or enter the URL
below into your web browser:

MEEaudio.com/X10Support



QUESTIONS? WE'RE HERE TO HELP!

Phone Support: 626-965-1008
Monday ~ Friday 9:00 am to 5:00 pm PST

Email Support: support@MEEaudio.com
All emails are responded to within 2 business days

