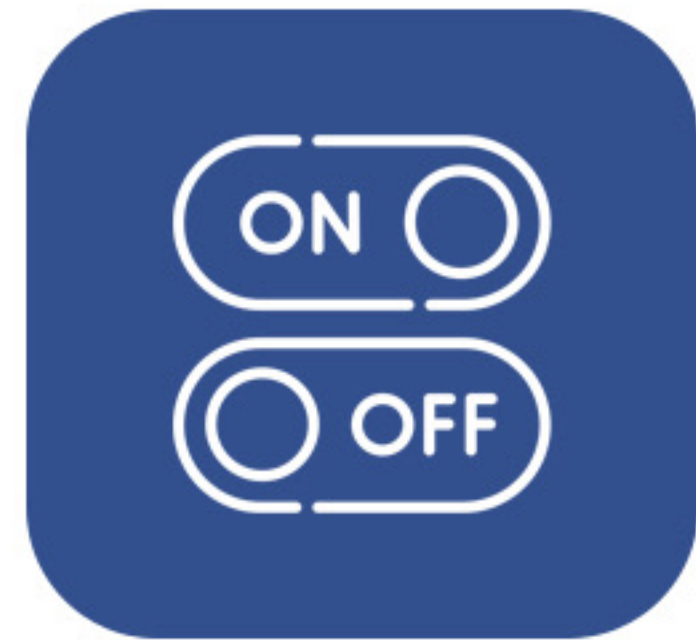


BORNOVA®

# PORTABLE MESH NEBULIZER

Small but powerful, helps you relax at any time.



**ON/OFF MODE**



**ERGONOMIC  
DESIGN**



**LOW NOISE**







## *SCIENTIFICALLY DESIGNED* **MESH NEBULIZER**

A nebulizer is a medical device that converts liquid medication into a fine inhalable mist, making respiratory treatment easier.



# ***INCLUDED* ACCESSORIES**



**Mouthpiece**



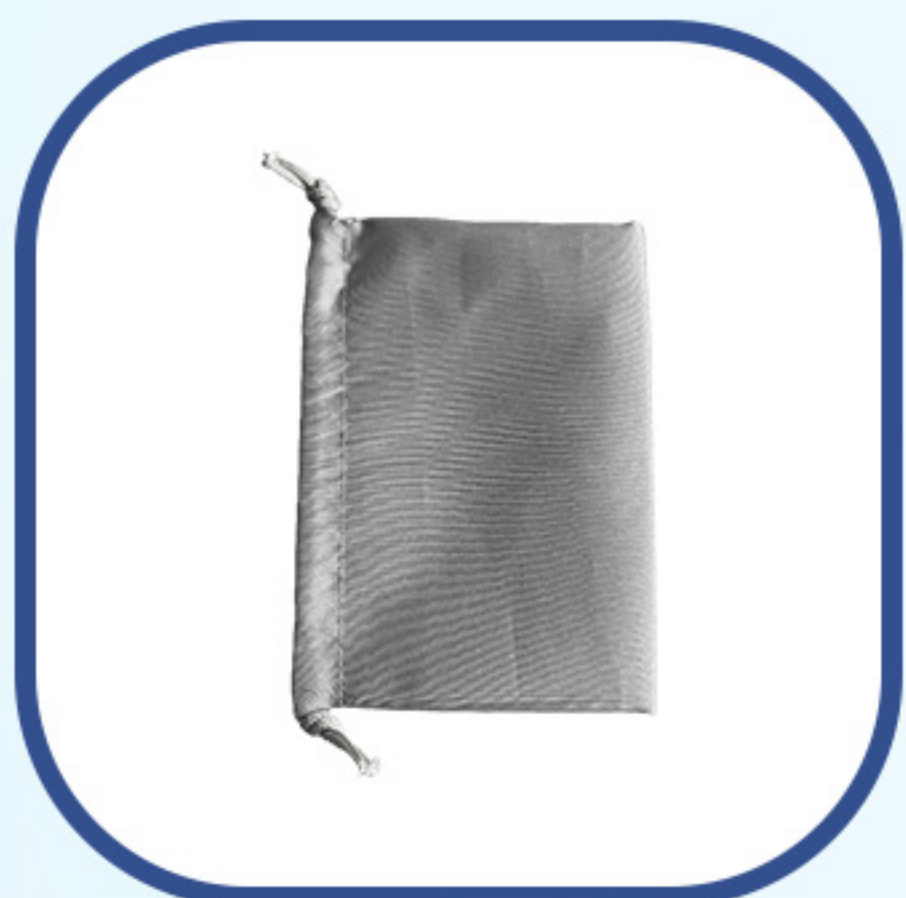
**Children's mask**



**Adult mask**



**Micro-USB cable**



**Portable soft  
case**



**Manual :  
EN FR DE NL IT ES**







## *KEY FEATURES* **RECHARGEABLE**

The advanced lithium-ion battery offers extended use for multiple nebulization sessions, ensuring uninterrupted respiratory care throughout the day.



# *TAKE IT WITH YOU* **WHEREVER YOU GO**

Our nebulizer is compact, lightweight, and perfect for when you're on the go. It's rechargeable and easy to carry, fitting into any bag. Enjoy the freedom to breathe comfortably, wherever you are.







# *RESPIRATORY* **RELIEF**

This nebulizer produces fine particles from 1 to 5  $\mu\text{m}$  that can penetrate deep into your body and help you breathe more easily.



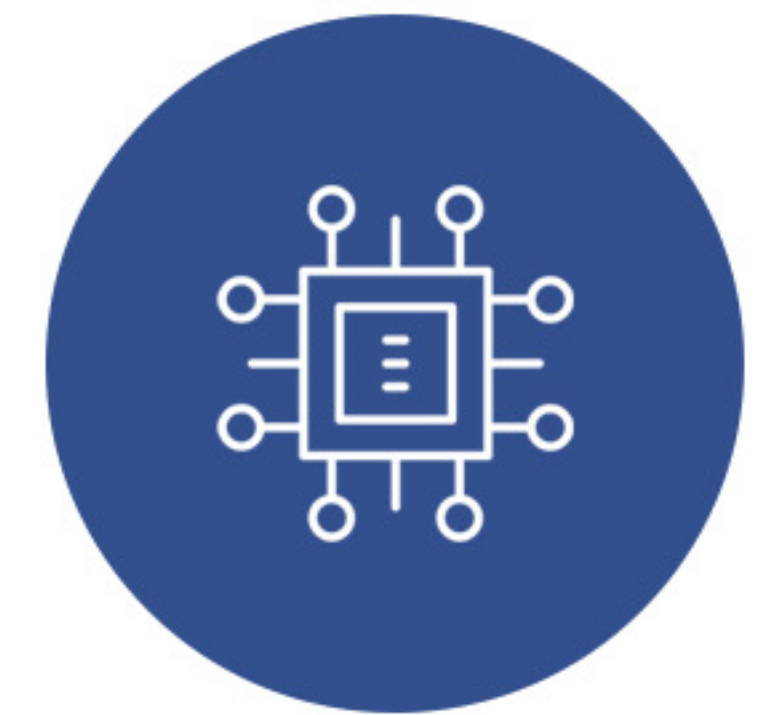
## ***SLANTED CUP DESIGN***

Smooth operation while  
sitting and lying down



## ***MICRO-MESH TECHNOLOGY***

Improved comfort  
and quick relief



## ***SMART CHIP***

Stronger endurance  
& better stabilization



# *QUIET & EFFICIENT* **NEBULIZER**

Silent, efficient nebulizer for discreet,  
effective respiratory treatment.

*OPERATING  
NOISE*  
**< 50dB**





# *INSTALLATION AND* **USAGE**



Open the lid and pour the medication into the reservoir



Choose the suitable mask



Press the power button to start and stop nebulization



Usage



Turn off the device with the ON/OFF button