

Heating Air Blower MANUAL INSTRUCTION

Products Performance:

- 220-240V/110-120V/50Hz/60Hz
- Air blower with heater function as air-dry and bactericidal for the hydromassage bathtub system.
- Assembled thermal protector.
- There is motor protector inside the motor.
- Noise: noise of air blower pump with a nozzle ≤ 72 dB.

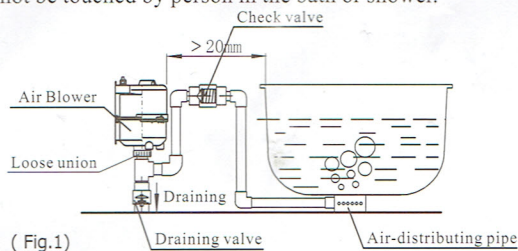
Parts And Materials:

- Pump casing: high temperature resistant reinforce plastic
- Air switch:15A,250V
- Carbon brush: using import materials

Using and Installing:



Installation must be done by professional qualified persons.

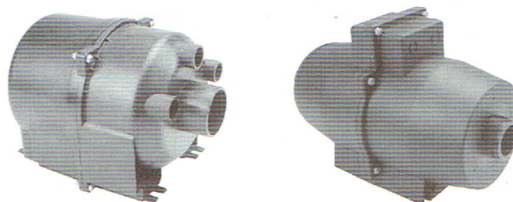
- Nozzles installation. The number of nozzles installed is no less than required minimum nozzles.
- Air-distributing pipe, check valve and draining valve must be connected by Heat-Resisting tube. The installation of check valve should be higher than regular water level of bathtub. (Fig.1)
- Use the flexible tube to link the nozzles and air-distributing pipe, and fix the flexible tube by clip. Then the connection pipe must be fastened.
- Air blow should be installed beside bathtub to deep it's air outlet downwards, then fasten the mounting support of air blow with bathtub bracket by bolts.
- After connection between air outlet and air pipe, take use of glue to fasten and seal.
- The connect pipe of air blower pump must use resist heat pipe.
- Properly heat-resist pipes must be installed on pump air-inlet and out-inlet and enough length should be guarded to prevent from the electric shock and moving parts hazard. Pumps must at least keep away from others parts and bath/spa 20mm. Protecting electric. Shock must be checked in final appliance.
- The heater is to be installed so that switches and other controls cannot be touched by person in the bath or shower.



CAUTION

- Air blower pump must be grounded in order to prevent electrical shock or injury. Outlet of air blower pump can not be stuffed up when it is operating.
- When the outlet air flow is too small, the air temperature will increase, pay attention to prevent scald.
- The power must be cut off before checking the air blower pump.
- The power must be cut off before any maintenance, any maintenance of the appliance should be done by manufacturer or it's service agent.
- Clean should be care and water shall not into the pump and any live parts.
- This air blower must only be installed by the manufacturer, its service agent or similarly qualified persons according to the wiring rules. The cleaning and maintenance also.

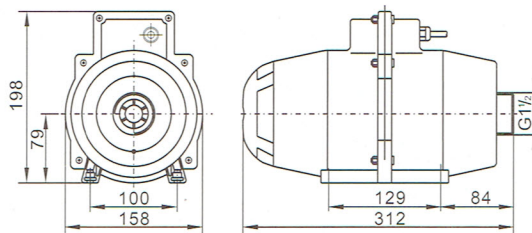
-  -Do not dispose this product as unsorted municipal waste.
-  -Contact your local government for information regarding the collection systems available. If electrical appliances are disposed of in landfills or dumps, hazardous substances can leak into the groundwater and get into the food chain, damaging your health and well-being.



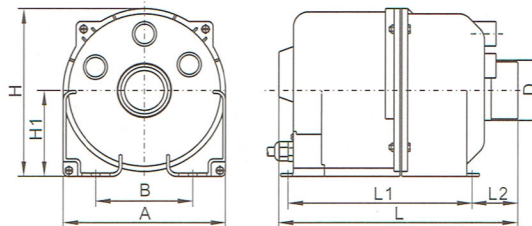
APR

APR900-Z

Installation Structure



APR900-Z



APR400/APR800/APR900

Model	Size(mm)										
	smooth outlet			threaded Outlet			L1	A	B	H	H1
	L	L2	D	L	L2	D					
APR400											
APR800	245	53	$\phi 54.5$	240	48	1 1/2 FBT	190	168	100	174	90
APR900											

Technical parameter list

Model	Motor Power (W)	Heater Power (W)	Current (A)		Nozzle quantity
			220-240V	110-120V	
APR400	400	180	2.8	5.5	12-24
APR800	700	180	4.0	8.0	16-32
APR900	900	180	5.0	10	16-32
APR900-Z	700	300	4.5	9.2	16-32

WARNING:



- In order to avoid overheating, do not cover the heater.
- The heater not be located immediately below a socket outlet.
- Non-return valves for preventing the water penetrate into the air blower pump shall be provided when the air blower pump is installed according to the construction and requirements of the whirlpool/spa.
- The air blower pump are not protecting against moisture and it should be well guarded when be installed into product to prevent water according to the whirlpool/spa's construction and requirements.
- This air blower is only intended for fixed spa.
- Not for transportation spa/ portable spa, swimming pool.
- The earthing of the air blower must be permanently connected to fixed wiring.
- This appliance is not intended for use by persons (including children) with reduced physical, sensory or mental capabilities, or lack of experience and knowledge, unless they have been given supervision or instruction concerning use of the appliance by a person responsible for their safety.
- Children should be supervised to ensure that they do not play with the appliance.
- The appliance should be supplied through a residual current device (RCD) having a rated residual operating current not exceeding 30 mA.
- Parts should be installed in the correct zone and that equipotential bonding should be carried out.
- Parts incorporating electrical components, except remote control devices, must be located or fixed so that they cannot fall into the bath or spa.
- Parts containing live parts, except parts supplied with safety extralow voltage not exceeding 12 V, must be inaccessible to a person in the bath or spa.