

TE series isolation transformer



Model:TE4121

Characteristics:

- Sub-plate mount, Vacuum Epoxy Encapsulated,
- Crimping terminal output.

Technical Index:

- Technical Index: Sub-plate mount
- Flame resistance : UL94-V0
- Insulation class: B
- Operation temperature: $-30^{\circ}\text{C} \sim +40^{\circ}\text{C}$
- Work frequency: 50Hz~60Hz
- Dielectric strength: 3.75KV 50Hz 1min

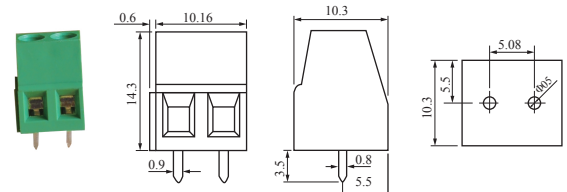


Technical Parameters table:

Primary voltage	110/220/230	V
Primary voltage range	± 10	%
Voltage regulation	≤ 18	%
Power	8	VA
Temperature rising	≤ 30	$^{\circ}\text{C}$
No load loss	≤ 0.6	W
weight	220	g

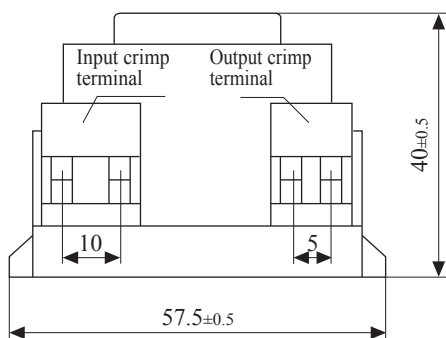
Secondary voltage	Secondary no load voltage	Secondary full load current
6V	7.2V	1333mA
7.5V	9V	1066mA
9V	11.2V	888mA
12V	14.4V	666mA
15V	18V	533mA
18V	22.2V	444mA
24V	28.9V	333mA

Connector Illustration:

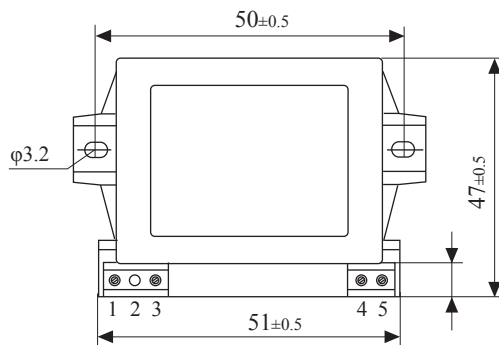


Dimension (in mm) :

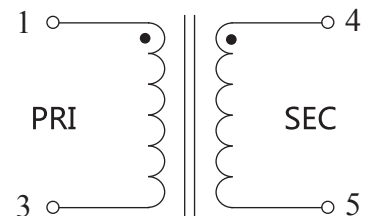
PCB direct welding crimp terminal,spacing5.08



Front View



Top View



Schematic Diagram